



The Kohler® Advantage

- Best-in-Class Power Quality**
 Kohler home generators provide industry-leading voltage and frequency regulation along with ultra-low levels of harmonic distortion for the best generator power quality you can get to protect your prized electronics.
- Extraordinary Reliability**
 Kohler is known for extraordinary reliability and performance and backs that up with an industry-leading 5-year or 2000 hour warranty.
- Powerful Performance**
 Exclusive Powerboost™ technology provides greater starting power. The Kohler 14 kW generator can easily start and run a 5 ton air conditioner without dropping power to other appliances — an unheard-of feat in other generators of this size.*
- Exclusive 100% Corrosion-Proof Generator Enclosure**
 Unlike aluminum or steel enclosures, the bold new Kohler design is completely corrosion-proof, even in harsh seaside environments, and is impact resistant even at -34° C (-30° F).
- Faster Response**
 Kohler home generators restore power to your home 2-3 times faster than competitive models.
- Quiet Operation**
 Kohler home generators provide quiet neighborhood-friendly performance. Now you will experience even quieter operation during the weekly variable-speed exercise with complete system diagnostics.

Standard Features

- DC Digital Control**
 - One digital controller manages both the generator set and Model RRT transfer switch functions
 - Designed for today's most sophisticated electronics
 - Electronic speed control responds quickly to varying household demand
 - Digital voltage regulation protects your sensitive electronics from harmonic distortion and unstable power quality
 - LED display shows system status
- Kohler Command PRO Engine Features**
 - Kohler Command PRO® OHV engine with hydraulic valve lifters for reliable performance without routine valve adjustment or lengthy break-in requirements
 - Powerful, reliable air-cooled performance
 - Simple field conversion between natural gas and LP vapor fuels while maintaining emission certification
- Designed for Easy Installation**
 - Polymer base eliminates the need for a concrete mounting pad, reducing installation time and cost
 - Hinged, locking roof
 - Fuel and electrical connections through the enclosure wall eliminate the need for stub-ups through the bottom
 - Load connection terminal block allows easy field wiring
 - Designed for outdoor installation only
- Model RRT Automatic Transfer Switch Included**
 - 100 amp ATS w/NEMA 1 enclosure with load center for indoor installation is supplied with the 14RESL
 - 200 amp ATS w/NEMA 3R enclosure for outdoor or indoor installation (no load center) is supplied with the 20RESL
 - See page 4 for additional information
- Generator Set Certifications**
 - Meets emission regulations for U.S. Environmental Protection Agency (EPA) phase 2 small off-road engines and CA 2006 and later LSI engines with both LP vapor and natural gas
 - UL 2200 listed
 - Approved for stationary standby applications in locations served by a reliable utility source

Generator Ratings

Model	Voltage	Phase	Hz	Alternator	Standby Ratings			
					Natural Gas		LP Gas	
					kW/kVA	Amps	kW/kVA	Amps
14RESL	120/240	1	60	2F5	12/12	50	14/14	58
20RESL	120/240	1	60	2F7	18/18	75	20/20	83

RATINGS: Standby ratings apply to installations served by a reliable utility source. All single-phase units are rated at 1.0 power factor. The standby rating is applicable to variable loads with an average load factor of 80% for the duration of the power outage. No overload capacity is specified at this rating. Ratings are in accordance with ISO-3046/1, BS5514, AS2789, and DIN 6271. GENERAL GUIDELINES FOR DERATING: **ALTITUDE:** Derate 4% per 305 m (1000 ft.) elevation above 153 m (500 ft.). **TEMPERATURE:** Derate 2% per 5.5°C (10°F) temperature increase above 16°C (60°F). Availability is subject to change without notice. The generator set manufacturer reserves the right to change the design or specifications without notice and without any obligation or liability whatsoever. Contact your local Kohler Co. generator distributor for availability.

* Check the appliance manufacturer's specifications for actual power requirements. Consult a Kohler® Power Systems professional to calculate your exact residential power system requirements.

Application Data

Engine

Engine Specifications	14RESL	20RESL
Manufacturer	Kohler	
Engine: model, type	CH740 4-Cycle	CH1000 4-Cycle
Cylinder arrangement	V-2	
Displacement, cm ³ (cu. in.)	725 (44)	999 (61)
Bore and stroke, mm (in.)	83 x 67 (3.27 x 2.64)	90 x 78.5 (3.54 x 3.1)
Compression ratio	9:1	8.8:1
Main bearings: quantity, type	2, Parent Material	
Rated RPM	3600	
Max. engine power at rated rpm, kW (HP)		
LP vapor, 60 Hz	17.6 (23.6)	21.7 (29.1)
Natural gas, 60 Hz	15.3 (20.5)	18.6 (25.0)
Cylinder head material	Aluminum	
Valve material	Steel/Stellite®	
Piston type and material	Aluminum Alloy	
Crankshaft material	Heat Treated, Ductile Iron	
Governor: type	Electronic	
Frequency regulation, no load to full load	Isochronous	
Frequency regulation, steady state	±0.5%	
Air cleaner type	Dry	

Engine Electrical

Engine Electrical System		
Ignition system	Electronic, Capacitive Discharge	
Starter motor rated voltage (DC)	12	
Battery charging alternator, amp rating	15	
Battery (purchased separately):		
Ground	Negative	
Volts (DC)	12	
Battery quantity	1	
Recommended cold cranking amps (CCA) rating for -18°C (0°F)	500	
Group size	51	

Exhaust

Exhaust System	
Exhaust temperature exiting the enclosure at rated kW, dry, °C (°F)	260 (500)

Lubrication

Lubricating System	14RESL	20RESL
Type	Full Pressure	
Oil capacity (with filter), L (qt.)	1.9 (2.0)	2.8 (3.0)
Oil filter: quantity, type	1, Cartridge	
Oil cooler	Integral	

Fuel Requirements

Fuel System	14RESL	20RESL
Fuel types	Natural Gas or LP Vapor	
Fuel supply inlet	1/2 NPT	
Fuel supply pressure, kPa (in. H ₂ O):		
Natural gas	1.2-2.7 (5-11)	
LP	1.7-2.7 (7-11)	
Fuel flow rates, Btu/hr.		
Natural gas	193,000	281,000
LP	203,000	340,000

Fuel Pipe Size

Minimum Gas Pipe Size Recommendation, in. NPT				
Pipe Length, m (ft.)	14RESL		20RESL	
	Natural Gas (193,000 Btu/hr.)	LP Vapor (203,000 Btu/hr.)	Natural Gas (281,000 Btu/hr.)	LP Vapor (340,000 Btu/hr.)
8 (25)	3/4	3/4	1	3/4
15 (50)	1	3/4	1	1
30 (100)	1	1	1 1/4	1
46 (150)	1 1/4	1	1 1/4	1 1/4
61 (200)	1 1/4	1	1 1/4	1 1/4

Fuel Consumption

Fuel Consumption, m ³ /hr. (cfh)				
Fuel Type	% Load	14RESL	20RESL	
Natural Gas	100%	5.4 (193)	8.0	281
	75%	4.7 (163)	6.9	243
	50%	3.5 (124)	4.6	161
	25%	2.6 (93)	3.6	127
LP Vapor	100%	2.3 (81)	3.9	136
	75%	2.1 (75)	3.1	109
	50%	1.8 (60)	2.3	82
	25%	1.2 (45)	1.7	59

LP vapor conversion factors:

8.58 ft.³ = 1 lb.
0.535 m³ = 1 kg
36.39 ft.³ = 1 gal.

Nominal fuel rating:

Natural gas: 37 MJ/m³ (1000 Btu/ft.³)
LP vapor: 93 MJ/m³ (2500 Btu/ft.³)

Alternator

Alternator Features

- Compliance with NEMA, IEEE, and ANSI standards for temperature rise
- Self-ventilated and dripproof construction
- Vacuum-impregnated windings with fungus-resistant epoxy varnish for dependability and long life
- Superior voltage waveform and minimum harmonic distortion from skewed alternator construction
- Digital voltage regulator with $\pm 1.5\%$ no-load to full-load RMS regulation
- Rotating-field alternator with static exciter for excellent load response
- Skewed generator construction produces a smooth AC waveform

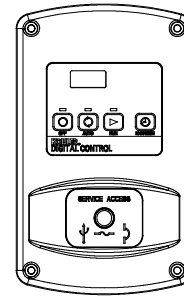
Alternator Specifications

Specifications	PowerBoost™ Generator 1-Phase
Manufacturer	Kohler
Output reconnectable	120/240
Type	2-Pole, Rotating Field
Leads, quantity	4
Voltage regulator	Digital
Insulation:	NEMA MG1-1.66
Material	Class H
Temperature rise	Class H
Bearing: quantity, type	1, Sealed Ball
Coupling	Direct
Amortisseur windings	Full
Voltage regulation, no-load to full-load RMS	$\pm 1.5\%$
One-step load acceptance	100% of Rating
Peak motor starting kVA @ 240 V:	
14RESL	32
20RESL	40.5

Sound Data

Model	Sound level at 7 m,	
	Low Speed No Load	Full Speed No Load
14RESL	66 dBA	70 dBA
20RESL	68 dBA	73 dBA

DC Digital Controller



Controller Features

- Integrated control for the generator set and Kohler® Model RRT transfer switch
- Membrane keypad with OFF, AUTO, RUN, and EXERCISE pushbuttons
- OFF, AUTO, and RUN LED indicators
- LED display:
 - Scrolling system status display includes engine runtime hours, battery voltage, generator voltage, engine temperature, and utility voltage*
 - Crank cycle status
 - Firmware version
 - Faults
 - Event history
- Faults displayed:
 - ATS communication error
 - Auxiliary fault
 - High battery voltage
 - High engine temperature
 - Internal faults
 - Locked rotor
 - Loss of generator AC sensing
 - Low battery voltage
 - Low cranking battery voltage
 - Low oil pressure
 - Overcrank
 - Overfrequency
 - Overspeed
 - Overvoltage
 - Speed sensor fault
 - Underfrequency
 - Underspeed
 - Undervoltage
- Exercise modes
 - Unloaded quiet variable-speed exercise with complete system diagnostics
 - Loaded full-speed exercise
- Smart engine cooldown senses engine temperature
- Remote two-wire start/stop capability for optional connection of Model RDT or RSB transfer switches
- Digital isochronous governor to maintain steady-state speed at all loads
- Digital voltage regulation: $\pm 1.5\%$ RMS no-load to full-load
- Automatic start with programmed cranking cycle
- Field-upgradeable firmware †
- Front-access mini USB connector for firmware upgrade
- Front access fuses and mini-breaker

* Model RRT transfer switch required for utility voltage display

† Requires Kohler® SiteTech™ software

Standard Features

- ATS: A Kohler® Model RRT automatic transfer switch is included with the generator set
- Battery cables
- Braided stainless steel flexible fuel line
- CARB- and EPA-certified fuel system
- Critical silencer
- Engine-mounted 15 amp battery charging alternator
- Field-connection terminal block
- Fuel solenoid valve and secondary regulator
- Line circuit breaker
- Multi-fuel system, LP vapor/natural gas, field-convertible
- Oil drain extension with shutoff valve
- DC generator set/ATS controller
- Rodent-resistant construction
- Sound-deadening, flame-retardant foam per UL 94, class HF-1
- Corrosion-proof polymer sound enclosure
- Premium 5-year limited warranty
- 6-amp battery charger

Available Accessories

Communication Accessories

- OnCue Home Generator Management System

Electrical System

- Battery
- Battery heater

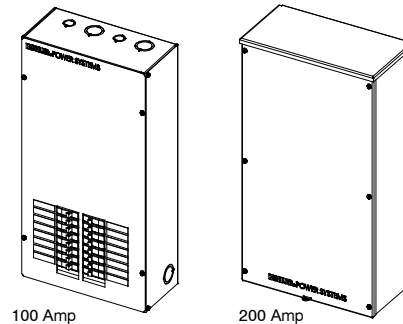
Maintenance

- Maintenance kit (air and oil filters)
- General maintenance literature kit
- Overhaul literature kit
- Production literature kit

Starting Aids

- Carburetor heater, 120 VAC (recommended for reliable starting at temperatures below 0°C [32°F])

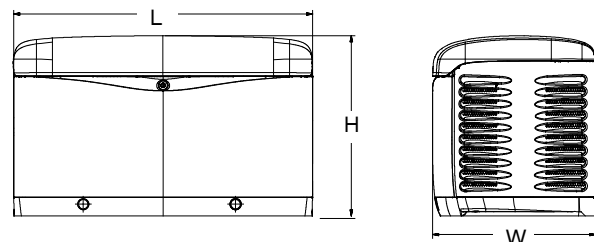
Model RRT Automatic Transfer Switch



- UL listed
- 240 VAC/60 Hz
- Withstand short circuit rating 10,000 amps with specified breakers
- Models:
 - 100 amp w/NEMA 1 enclosure with load center for indoor installation is supplied with the 14RESL
 - 200 amp w/NEMA 3R enclosure for outdoor or indoor installation (no load center) is supplied with the 20RESL
- Designed for the 14/20RES/RESL generator sets with RDC or DC integrated generator set/ATS controller
- See specification sheet G11-120 for more information.

Dimensions and Weights

Overall Size, L x W x H:	1219 x 665 x 733 mm (48 x 26.2 x 29 in.)
Weight:	14RESL 186 kg (410 lb.) 20RESL 227 kg (500 lb.)



NOTE: These dimensions are provided for reference only and should not be used for planning installation. Contact your local distributor for more detailed information.

DISTRIBUTED BY:

© 2010 by Kohler Co. All rights reserved.